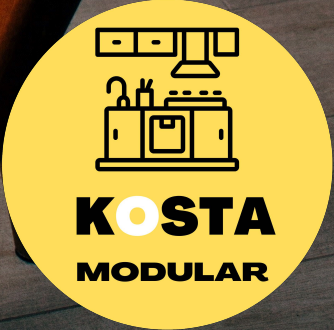


FURNITURE CATALOGUE



“ ...elegance is synonymous with refinement and understatement, and comes of sobriety rather than excess.

DECOR YOUR HOME WITH THE
BEAUTY OF WOOD

CLEAN LINES,
CLASSIC BEAUTY

sensitivity



“Timeless and
long-lasting.”



Wood is a renewable resource. At KOSTA Modular we ensure that our wood comes from 100% sustainable forests, enabling a conscious management of forestry heritage.

CONTENTS

COLLECTIONS KOSTA-MODULAR

04	Custom Collection - SOFA
05	Elanza - COFFEE TABLE
06	Voila - COFFEE TABLE
07	Linea- SHELVING
08	Muto - BOX SHELVING
09	Balance - SHOERACK
10	Ebony - STOOLS & CHAIRS
11	Zemba - LOUNGE CHAIR
12	Bristol - LOUNGE CHAIR
13	Prestige - TV Unit
14	Cinamo - TV Unit

Prices for items from this catalogue are available on request. The Company reserves the right to change the available colour patterns, dimensions, functionality and prices of presented products. This catalogue is published for informational purposes only. Data presented in the catalogue is up-to-date in the month of first printing of the catalogue - i.e. April 2022



CUSTOM COLLECTION

We're all here. Our living room is a common space that has to meet many expectations. And when a sofa isn't enough, Custom comes to the rescue.

The module leisure set can be freely put together or apart.

KOSTA MODULAR



THE KOSTA-MODULAR
ADVANTAGE



KOSTA MODULAR

Living room or home office - the setup will fit both. By opening the side drawer you can reach the most important things. The drawers will organize your papers, and the back bottom chest will fit even the bigger important files and folders

CUSTOM COLLECTION

SEAT BASE Available colours:



light gray/ dark gray / oak /beige / blue-gray / taupe



RESISTANT TO EVERYTHING EXCEPT CREATIVITY



KOSTA MODULAR

ELANZA

If you're looking for an excuse to buy a coffee table, then look no further than their beauty.

Coffee tables are a little bit like ottomans. They help add interest to your rooms and make them more beautiful. A well-placed coffee table can complement your three-piece-suite and help to bring out the best of the rest of the furniture in your room. Moreover, these objects are beautiful in their own right.



**RESISTANT TO EVERYTHING
EXCEPT CREATIVITY**




**THE KOSTA-MODULAR
ADVANTAGE**



KOSTA MODULAR

VOILA

It's all to do with how our brains process spaces. It turns out that coffee tables serve the vital function of the centerpiece in our rooms, helping to bring the whole ensemble together.

Think about how you feel when you place a coffee table in the middle of your sofa suite. All of a sudden, the room feels complete. It's like putting the cherry on top of a cake.



**RESISTANT TO EVERYTHING
EXCEPT CREATIVITY**




**THE KOSTA-MODULAR
ADVANTAGE**

LINEA SHELVING

Free from any structural restrictions, these suspended bookshelves can be used to create compositions that adapt naturally to their surroundings, playing with shapes and dialoguing with the existing architecture. An original way to tell a story, creative functional organisation of space.



Lacquered sides th. 3-5 cm D 13,6-24,8-38,4

	(cm)	(cm)	(cm)	(cm)
↔	3	3	3	5
	18,4	18,4	18,4	36,8
	36,8	36,8	36,8	73,6
	55,2	55,2	55,2	110,4
	73,6	73,6	73,6	147,2
	92,0	92,0	92,0	184,0
↓	110,4	110,4	110,4	220,8
	147,2	147,2	147,2	257,6
	184,0	184,0		
	220,8	220,8		
	257,6	257,6		
	294,4	294,4		
↙	13,6	24,8	38,4	38,4

Lacquered shelves th. 3-5 cm D 13,6-24,8-38,4

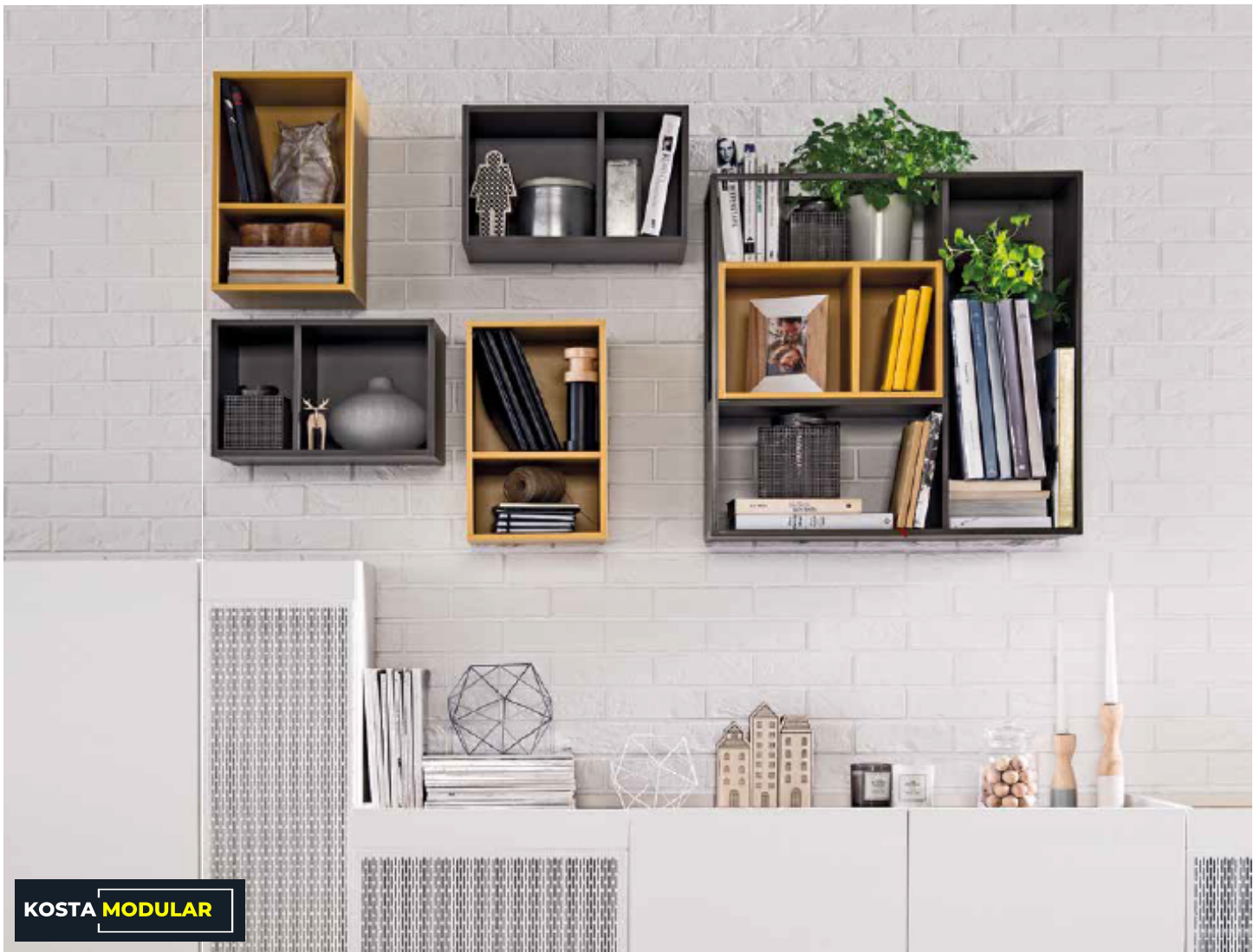
	(cm)	(cm)	(cm)	(cm)
↓	3	3	3	5
	18,4	18,4	18,4	36,8
	36,8	36,8	36,8	73,6
	55,2	55,2	55,2	110,4
	73,6	73,6	73,6	147,2
	92,0	92,0	92,0	184,0
↔	110,4	110,4	110,4	220,8
	147,2	147,2	147,2	257,6
	184,0	184,0		
	220,8	220,8		
	257,6	257,6		
	294,4	294,4		
↙	13,6	24,8	38,4	38,4

Lacquered backs (th.1,9), polished glass (th.2), Stratus fabric (th.2,2)

	(cm)	(cm)	(cm)	(cm)	(cm)	(cm)
↔	36,8	73,6	110,4	147,2	184	220,8
	36,8	36,8	36,8	36,8	36,8	36,8
	73,6	73,6	73,6	73,6	73,6	73,6
↓	110,4	110,4	110,4	110,4	110,4	110,4
	184,0	184,0	184,0			
	257,6	257,6				

Available colours:





KOSTA MODULAR



Muto Boxes in MULTI colors can be freely placed on the wall and conjoined using a shelf. Add new ones, turn the old ones, create surprising combinations and change them as you please.

MUTO COLLECTION

FRONTS

Available colours:



white with oak elements

BOXES

Available colours:



grey / honey / blue / glass



BALANCE COLLECTION

Easy to maintain: With a series of drawers and shelves that vary in height, the stand will easily house all of your shoes without creating a problem. Place them according to the height of the drawers which can save you a lot of time choosing the pair and organizing it.



THE KOSTA-MODULAR
ADVANTAGE



KOSTA MODULAR



BALANCE COLLECTION

A perfect fit for your home: With the amount of furniture present, it can be difficult to accommodate a new unit in your home. Shoe racks not only keep the interior of a house tidy, but can also show its magical effect outside. Whenever you find it difficult to accommodate the room inside your home, place it outside. Not only will it create additional space inside, but it will also bring a sophisticated and attractive look to your exterior.



THE KOSTA-MODULAR
THE ADVANTAGE



OVERALL:	18.75"W x 22.5"D x 33"H.	SEAT:	18.75"W x 17.75"D x 4.25" Thick.
SEAT HEIGHT:	24.75".	FRONT LEGS:	1" sq., 16"H.
REAR LEGS:	1" sq., 16.75"H.	CLEARANCE UNDER SEAT:	21".



EBONY COLLECTION

Our stools & chairs get their refined good looks from tapered wood legs, a low cutout back and a plush padded seat.



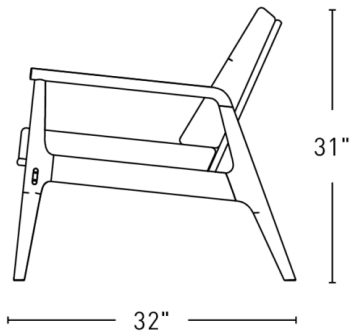
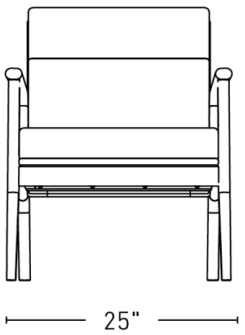
KOSTA MODULAR



DESIGN

- Designed by our team
- Custom upholstered in premium fabric and leather options.
- Collection includes side chair, counter stool and bar stool.

LOUNGE CHAIRS



KOSTA MODULAR

ZEMBA Collection

- The Zemba chair celebrates contemporary design, the natural beauty of wood, and traditional joinery techniques that are a hallmark of Kosta-Modular designs.





FRAME

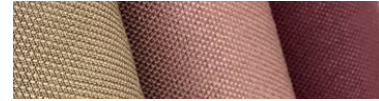
UPHOLSTERIES



Solid Walnut



Black stained ash



LOUNGE CHAIRS



KOSTA MODULAR

BRISTOL Collection

- Designed by our team
- Custom upholstered in premium fabric and leather options.
- It has a classic shape, with details enhanced through the use of state-of-the-art technology.
- The result is an armchair with a resounding silhouette and a great ergonomics.



Weight 10 Kg



seat 55 cm



THE KOSTA-MODULAR
ADVANTAGE



PRESTIGE COLLECTION

Keep in mind that the balance is important; your television shouldn't be an opposing focal center or in unthoughtful contrast with a room's decor, any more than it should find itself lost in an array of "cover-up" ornamentation. But luckily for us, our designers have discovered and implemented a variety of ways in which the TV media set can fit into the most elaborate decor composition becoming a focal center instead of an eyesore.



CINAMO COLLECTION

The TV wall is developed as a plain accent, and in addition stylish furniture details are introduced without disturbing the purity of lines. The elaborate character and individuality of composition comes from the small artistic details, unique furniture insertions, book elements, and thoughts that decorate the surrounding shelves.





PRESTIGE COLLECTION

A very stylish decor configuration with a minimalist composition of another modern urban decor – using a configuration that has certain functionality in mind.

Urban luxury and artistic riches. Truly very modern and urban design solution – elegant, tidy, and flexible, and its functionality does not contradict the overall aesthetic of contemporary styles.

CINAMO COLLECTION

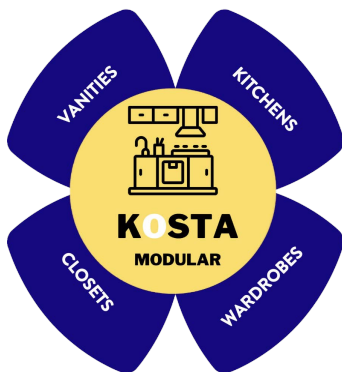
Modern technologies and design innovations help even a simple TV wall to become a work of art – movable boxes and panels, dynamic constructs, usage of intriguing materials and technological advantages that support the designers' creativity. Let's take a closer look.





KOSTA-MODULAR

ECO PASSPORT FOR A SUSTAINABLE WORLD



SUSTAINABLE DESIGNS

Within OUR strategy, both, the quality of products and the preservation of the environment in our production processes, are a priority. Over the years we as the promoters of the Company have been engaged in searching for environmentally friendly raw materials, processes, products and packaging.

Among many others, we can highlight the following characteristics and actions:

- To design long lasting and good quality products.
- To reduce the consumption of raw materials.
- To use recycling materials.
- To use production systems which are environmentally friendly.

The achievement of these aims will contribute to a real sustainable development.

Our products comply with demanding Indian standards as regards product resistance and ergonomics. At Kosta-Modular we take utmost care of our people's health.

Manish Tiwari

FRESH, CLEAN INNOVATIVE DESIGN PRODUCED IN INDIA
TIMELESS DESIGN FOR A SUSTAINABLE WORLD

www.kostamodular.com



THE KOSTA-MODULAR
ADVANTAGE

KOSTA MODULAR

KOSTA-MODULAR



RESPONSIBLE MANUFACTURING

- This product is totally manufactured in India
- The Kosta-Modular designs are created for a long duration. This helps to make a friendly use of the natural resources.
We offer a 3-year guarantee on all the Kosta-Modular products. Kosta-Modular guarantees a period of availability of spare parts of 10 years for any product.
- The wood used to manufacture our designs comes from sustainable managed forests
- The MDF material and glues used in the production are formaldehyde free.
- Kosta-Modular's fabrics comply with the strict ISO 14001 international environmental regulations regarding its products and its manufacturing processes.
- Kosta-Modular's upholstery is fire-resistant but avoids the use of harmful retardants
- The foams used by Kosta-Modular complies the most exhaustive ecological textile certification: The analyses include prohibited and regulated substances, chemicals considered dangerous to health, and preventive parameters.
- Kosta-Modular's chrome plating process uses a trivalent chromium bath to replace the highly-toxic hexavalent chromium bath. The trivalent chromium process must produce hard chrome components that perform as well as or better than the older process.
Other additional advantages involved in this process:
 - It is not necessary to reduce hexavalent chromium in wastewater.
 - It makes it easier to handle and use the product.
 - No gas emissions are produced.

- The treatment of metal parts for their subsequent painting, with powder paint or chromed, is the one corresponding to a degreasing and phosphating of the same. No aromatic solvents are used and no diffuse emissions of volatile organic compounds are generated.
- The recyclability of the metallic materials used by Kosta-Modular is 95%
- Our plastic elements are excluded from heavy metals and phthalates in their manufacture, as well as halogenated plastics such as PVC.
- Kosta-Modular promotes processes with low water consumption.

ENVIRONMENTALLY FRIENDLY PACKAGING

- In the pursuit of an environmentally friendly packing, Kosta-Modular is aiming to removing all the plastic from its process.
- All Kosta-Modular packing shall be in cardboard packaging made with recycled materials and will be 100% recyclable with no staples used in the production.
- Our remaining plastics packaging contain no halogen.

LOGISTICS MINIMIZING CARBON FOOTPRINT

- Kosta-Modular chooses the eco-friendliest transportation method available.
- We select logistic partners who use environmentally-friendly technologies for their vehicles/engines and are located close to the factory where our products are manufactured in order to reduce the emission release.
- Load Optimization. We try to send a truck only when it is fully loaded.
- Route Optimization. By choosing the best route, it is possible to save fuel and, consequently, reduce the amount of CO₂ emissions.



USE OF WOOD
FROM
SUSTAINABLY
MANAGED FORESTS



ECOLOGICAL
UPHOLSTERY
WITHOUT
PBB & PBDE



FOAMS FIRE
RETARDANT &
FREE OF TOXIC
SUBSTANCES



FORMALDEHYDE
FREE
PRODUCTS



HEXAVALENT
CHROMIUM-FREE
FINISHES



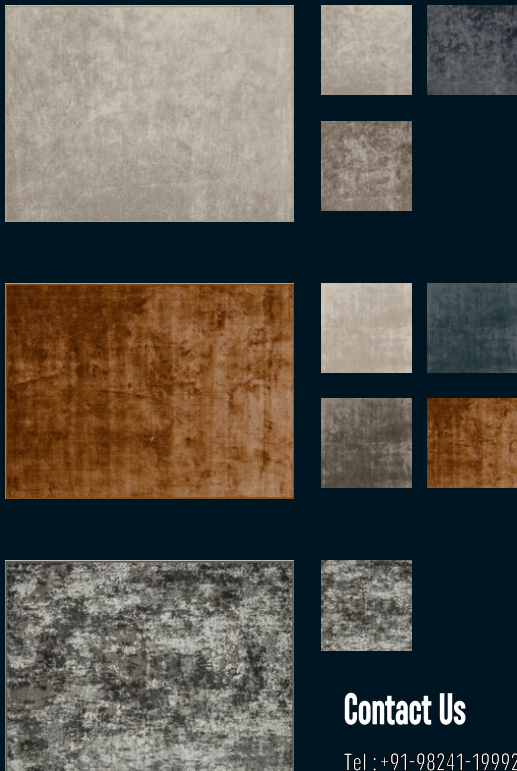
PROCESSES
WITH LOW
WATER
CONSUMPTION



RECYCLABLE
MATERIALS AND
PACKAGING



**Furnish your home,
furnish your life.**



Contact Us

Tel : +91-98241-19992

Email : office @kostamodular.com

LG Hospitality Pvt. Ltd

Regional Off. - Shop No.1, Ravi Darshan Society (Near SBI) Bhattar Cross Road, Surat

Corp Off. - R-14, NDSE-II, New Delhi



KOSTA-MODULAR
ADVANTAGE